



© olly/ Fotolia.com

*Sampling not required*

## SATELLITE WATER QUALITY

Rapid, robust and cost effective method to get historic and ongoing spatial information on water quality

### GRID SPACING

10, 15, 30, 250, 300, 500m

### HORIZONTAL ACCURACY

Typically 1-2 times the grid spacing

### PRODUCTS

Turbidity, Sediments, Chlorophyll, Organic Matter, Harmful Algal Blooms, Temperature

### DELIVERABLES

GeoTIFF, KMZ, PDF, ASCII reporting or online web access through the [eoapp.eomap.com](mailto:eoapp.eomap.com)

### HOW TO ORDER

1. Send your area to [order@eomap.de](mailto:order@eomap.de)
2. We provide a feasibility assessment and a quotation
3. Confirm order and access data

### DELIVERY

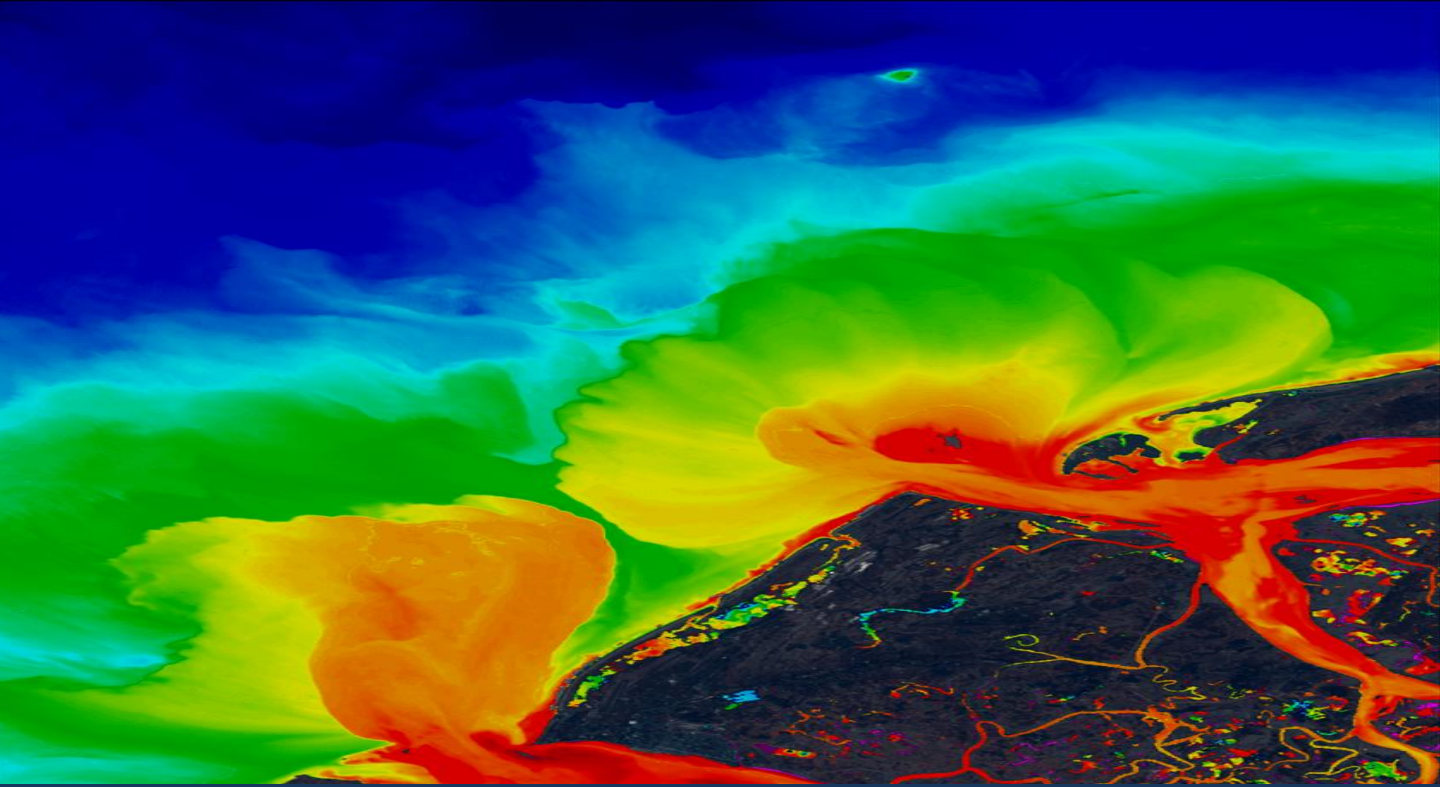
Typically within a few days of ordering through [eoApp®](#), ftp, WMS, or e-mail attachment

### PRICES

Ask for a quotation: [order@eomap.de](mailto:order@eomap.de). Prices are typically in the range of 0.0001-10 USD/sq km



[www.eomap.com](http://www.eomap.com) | [info@eomap.de](mailto:info@eomap.de) | T: +49 (0) 8152 9986110



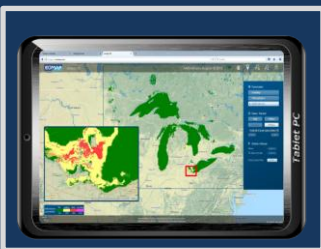
WQ

## SATELLITE WATER QUALITY



### Dredging monitoring

Australian O&G Company Woodside Energy sought a water quality monitoring solution to satisfy regulatory requirements for pipeline dredging operations. EOMAP implemented a cost-effective satellite-based turbidity monitoring service which was maintained for more than two years and provided updated spatial turbidity data every second day.



### Harmful algae bloom tracking

EOMAP's web application eoApp® allows for tracking blue algae blooms and water quality parameters such as chlorophyll and turbidity. A range of satellite sensor data are imbedded into this first globally harmonized monitoring system, supporting daily monitoring at continental scales, historical reviews and highest spatial resolutions (for ponds, small lakes and rivers).



### Dam restoration monitoring

High resolution water quality products (chlorophyll-a, turbidity) were used for non-invasive impact monitoring of water treatment activities in a dam in Saxony, Germany. In the summer 2015, a total of 17 synoptic imagery records from the Landsat satellite mission were delivered to the client, providing a valuable database for monitoring activities.